

User Manual

**1x16 HDMI Distribution Amplifier  
AT-HD-V116**



**BACK**



**FRONT**

## TABLE OF CONTENTS

1. Introduction	2
2. Features	2
3. Specification	2
4. Package Contents	3
5. Panel Descriptions	3
5.1 Front Panel	3
5.2 Rear Panel	3
6. Remote Control	4
7. IR Extender	4
7.1 IR Extender Connection	4
7.2 The IR Extender Components Setup	5
8. Applications	5
9. Safety Information	6
10. Warranty	7
11. Atlona Product Registration	8

## INTRODUCTION

Atlona Technologies' AT-HD-V116 is a 1x16 HDMI Distribution Amplifier designed to work as a splitter for any High Definition Video application. With 1 HDMI Input and 16 HDMI Outputs, the AT-HD-V116 is capable of splitting High Definition signal from one source to sixteen separate displays with compatible inputs. With a built in amplifier, this unit has the ability to boost this signal great distance, while preventing both signal loss and picture degradation. This splitter supports data rates up to 6.75 Gbps and enables HDMI formats at resolutions up to 1080p or 1920x1200 and WUXGA DVI resolution at (1920x1200). With HDCP Compatibility, Atlona's 1x16 HDMI Distribution Amplifier is perfect for all applications sending High Definition Video signal to multiple displays.

## FEATURES

- 1x16 HDMI Distribution Amplifier: 1 HDMI Output, 16 HDMI Inputs
- HDMI and HDCP compliant
- Supports video bandwidth up to 6.75 Gbps
- Supports wide range of PC resolutions from VGA to WUXGA 1920x1200 and HDTV/DTV resolutions 480i/480p, 576i/576p, 720p, 1080i and 1080p
- Compatible with all HDMI sources and displays
- Supports Digital Video TMDS formats in Deep Color 36bits
- Supports color depth of up to 36
- Bi-direction color space conversion(SCS) between RGB and YCBCR color spaces
- Auto-Scan input and outputs status via LED display on front panel
- Control by Select buttons on front panel or IR Remote Controller
- IR Extender with 1000ft long distance
- Ear mount and 19 inch Rack mountable type panel
- Power supply 12V DC

## SPECIFICATIONS

- 1x16 HDMI Distributor: 1 x HDMI Input to 16x HDMI Outputs
- Supports :HDMI Standard, DVI and HDCP Compliant
- Video Support: HDMI formats up to 1080p or 1920x1200 and DVI up to WUXGA 1920x1200 HD resolutions.
- Audio Support: DTS-HD Master Audio, Dolby True -HD & Dolby Digital Plus
- Compliant standard: HDMI, DVI and HDCP.
- HDTV Support: HDMI formats up to 1080p or 1920x1200 and WUXGA 1920x1200 resolution.
- Controls: Manual or IR Remote and IR Extender (Maximum Distance 300M)
- Data Rates: 6.75 Gbps.
- Pixel clocks: 25MHz to 225 Mhz.
- HDMI Cable Distance: 45ft at 6.75Gbps.
- Supports digital video standards such as: RGB/YCBCR : 24/30/36-bits; YCBCR :8/10/12/16/20/24-bits; Double data rate interface for RGB/YCBCR : 12/15/18-bits
- Infrared frequency: 38KHz.
- Safety Approvals: CE, FCC, RoHS.
- Power Supply: 12V DC

## PACKAGE CONTENTS

- 1x16 Splitter Unit (AT-HD-V116)
- Instruction Manual
- IR Remote Control
- Universal AC/DC power adapter: 12VDC
- 19 inch Ear mount pair
- IR Extender receiver

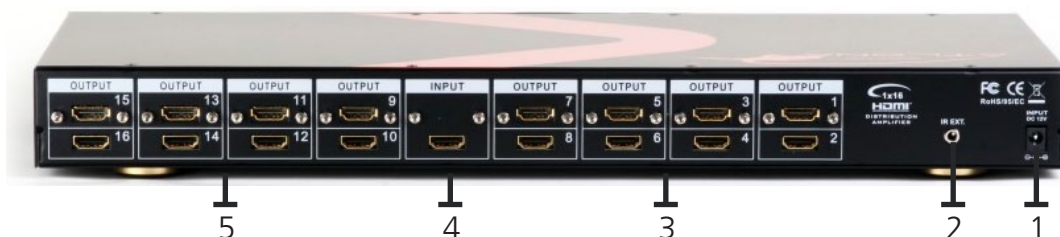
## PANEL DESCRIPTION

### 1. Front Panel



- 1. POWER SWITCH.** The power switch turns the unit on and off. The LED will illuminate red to indicate that the switcher is ON
- 2. INPUT SOURCES STATUS DISPLAY.** Input source 1 LED illuminate blue to indicate desired video source is present on that input.
- 3. OUTPUT SOURCES STATUS DISPLAY.** Output 1-16Status shows by LED display.
- 4. IR SENSOR.** The IR sensor receives IR commands from the supplied remote controller.
- 5. 19 INCH EAR MOUNT PAIR.** 19inch case Ear Mount pair

### 2. Rear Panel



- 1. DC POWER INLET.** Power Input: 12VDC
- 2. IR EXTENDER CONTROL.** Support one of IR Extender' extend distance maximum 300Meters
- 4. VIDEO INPUTS:** HDMI Input 1  
HDMI digital video/audio connector: HDMI Female connector.
- 3, 5. VIDEO OUTPUTS:** HDMI Outputs 1-16  
HDMI digital video/audio connector: HDMI Female connector.

## REMOTE CONTROL

Ensure the mains voltage supply matches the label on the supplied plug-Pack (+/- 10%)  
 Ensure that the power switch is OFF.

Connect all audio video sources and destination equipment.

Power up all HD Source and Displays.

For each desired output select the appropriate input by using the front panel select buttons or IR remote control .

When powering up the AT-HD-V116 will return to its last used setting before Powered down.

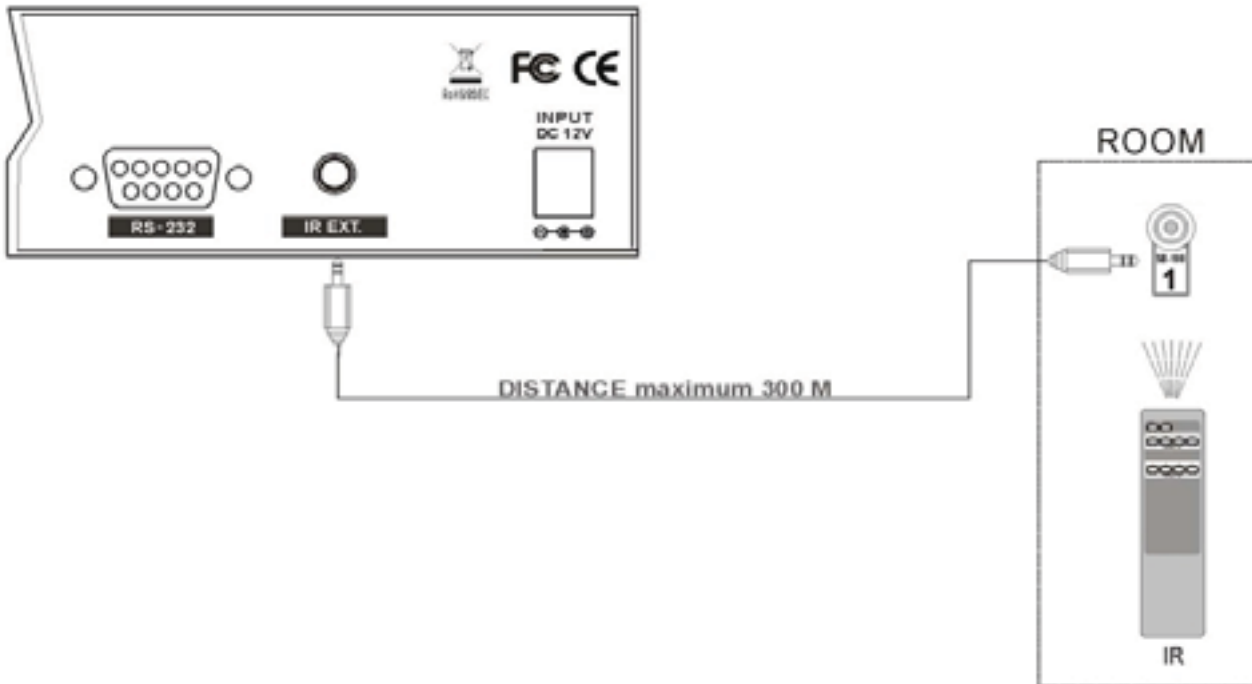


### 1,2. SWITCH POWER ON OR OFF

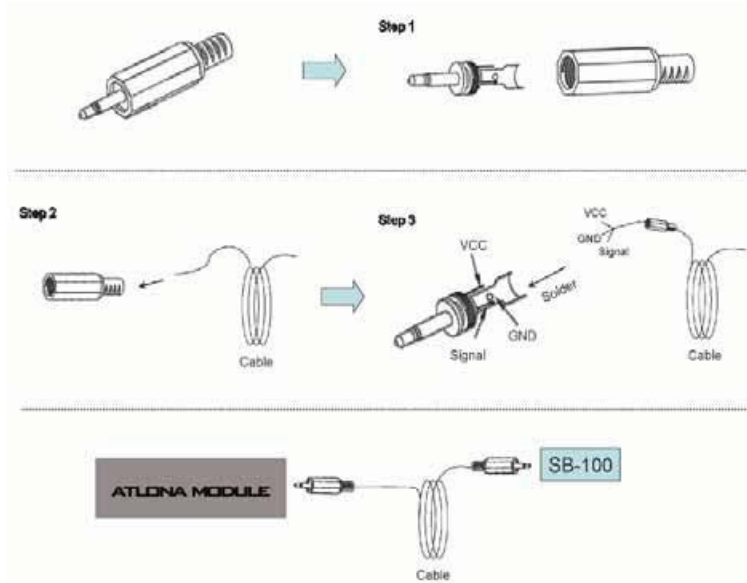
## IR EXTENDER

### 1. IR Extender Connection

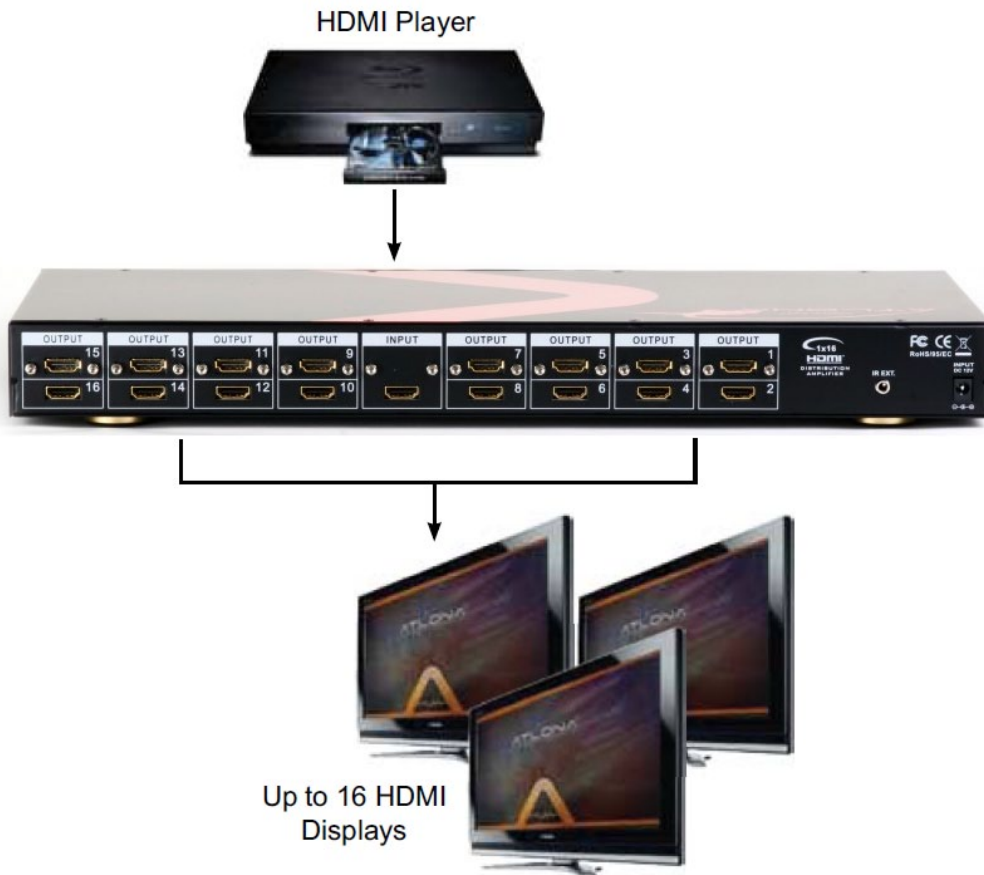
#### REAR PANEL IR EXTENDER PORT



## 2. The IR Extender Components Setup



## APPLICATIONS



## SAFETY INFORMATION

### Safeguards



To reduce the risk of electric shock, do not expose this product to rain or moisture



Do not modify the wall plug. Doing so will void the warranty and safety features.



If the wall plug does not fit into your local power socket, hire an electrician to replace your obsolete socket.



This equipment should be installed near the socket outlet and the device should be easily accessible in the case it requires disconnection.

### Precautions

FCC regulations state that any unauthorized changes or modifications to this equipment, not expressly approved by the manufacturer, could void the user's authority to operate this equipment.

Operate this product using only the included external power supply. Use of other power supplies could impair performance, damage the product, or cause fires.

In the event of an electrostatic discharge this device may automatically turn off. If this occurs, unplug the device and plug it back in.

Protect and route power cords so they will not be stepped on or pinched by anything placed on or against them. Be especially careful of plug-ins or cord exit points from this product.

Avoid excessive humidity, sudden temperature changes or temperature extremes.

Keep this product away from wet locations such as bathtubs, sinks, laundries, wet basements, fish tanks, and swimming pools.

Use only accessories recommended by Atlona to avoid fire, shock, or other hazards.

Unplug the product before cleaning. Use a damp cloth for cleaning and not cleaning fluid or aerosols. Such products could enter the unit and cause damage, fire, or electric shock. Some substances may also mar the finish of the product.

Never open, remove unit panels, or make any adjustments not described in this manual. Attempting to do so could expose you to dangerous electrical shock or other hazards. It may also cause damage to your AT-HD-V116. Opening the product will void the warranty.

Do not attempt to service the unit. Disconnect the product and contact your authorized Atlona reseller or contact Atlona directly.

## Atlona, Inc. ("Atlona") Limited Product Warranty Policy

### Coverage

Atlona warrants its products will substantially perform to their published specifications and will be free from defects in materials and workmanship under normal use, conditions and service.

Under its Limited Product Warranty, Atlona, at its sole discretion, will either:

- A) repair or facilitate the repair of defective products within a reasonable period of time, restore products to their proper operating condition and return defective products free of any charge for necessary parts, labor and shipping
- OR**
- B) replace and return, free of charge, any defective products with direct replacement or with similar products deemed by Atlona to perform substantially the same function as the original products
- OR**
- C) refund the pro-rated value based on the remaining term of the warranty period, not to exceed MSRP, in cases where products are beyond repair and/or no direct or substantially similar replacement products exist.

Repair, replacement or refund of Atlona's products is the purchaser's exclusive remedy and Atlona's liability does not extend to any other damages, incidental, consequential or otherwise.

This Limited Product Warranty extends to the original end-user purchaser of Atlona's products and is non-transferrable to any subsequent purchaser(s) or owner(s) of these products.

### Coverage Periods

Atlona's Limited Product Warranty Period begins on the date of purchase by the end-purchaser. The date contained on the end-purchaser's sales or delivery receipt is the proof purchase date.

#### **Limited Product Warranty Terms – New Products**

- 10 years from proof of purchase date for hardware/electronics products purchased on or after June 1, 2013
- 3 years from proof of purchase date for hardware/electronics products purchased before June 1, 2013
- Lifetime Limited Product Warranty for all cable products

#### **Limited Product Warranty Terms – Refurbished (B-Stock) Products**

- 3 years from proof of purchase date for all Refurbished (B-Stock) hardware and electronic products purchased on or after June 1, 2013

### Remedy

Atlona recommends that end-purchasers contact their authorized Atlona dealer or reseller from whom they purchased their products. Atlona can also be contacted directly. Visit [www.atlona.com](http://www.atlona.com) for Atlona's contact information and hours of operation. Atlona requires that a dated sales or delivery receipt from an authorized dealer, reseller or end-purchaser is provided before Atlona extends its warranty services. Additionally, a return merchandise authorization (RMA) and/or case number, is required to be obtained from Atlona in advance of returns.

Atlona requires that products returned are properly packed, preferably in the original carton, for shipping. Cartons not bearing a return authorization or case number will be refused. Atlona, at its sole discretion, reserves the right to reject any products received without advanced authorization. Authorizations can be requested by calling 1-877-536-3976 (US toll free) or 1-408-962-0515 (US/international) or via Atlona's website at [www.atlona.com](http://www.atlona.com).

### Exclusions

This Limited Product Warranty excludes:

- Damage, deterioration or malfunction caused by any alteration, modification, improper use, neglect, improper packing or shipping (such claims must be presented to the carrier), lightning, power surges, or other acts of nature.
- Damage, deterioration or malfunction resulting from the installation or removal of this product from any installation, any unauthorized tampering with this product, any repairs attempted by anyone unauthorized by Atlona to make such repairs, or any other cause which does not relate directly to a defect in materials and/or workmanship of this product.
- Equipment enclosures, cables, power supplies, batteries, LCD displays, and any accessories used in conjunction with the product(s).
- Products purchased from unauthorized distributors, dealers, resellers, auction websites and similar unauthorized channels of distribution.



### **Disclaimers**

This Limited Product Warranty does not imply that the electronic components contained within Atlona's products will not become obsolete nor does it imply Atlona products or their electronic components will remain compatible with any other current product, technology or any future products or technologies in which Atlona's products may be used in conjunction with. Atlona, at its sole discretion, reserves the right not to extend its warranty offering in instances arising outside its normal course of business including, but not limited to, damage inflicted to its products from acts of god.

### **Limitation on Liability**

The maximum liability of Atlona under this limited product warranty shall not exceed the original Atlona MSRP for its products. To the maximum extent permitted by law, Atlona is not responsible for the direct, special, incidental or consequential damages resulting from any breach of warranty or condition, or under any other legal theory. Some countries, districts or states do not allow the exclusion or limitation of relief, special, incidental, consequential or indirect damages, or the limitation of liability to specified amounts, so the above limitations or exclusions may not apply to you.

### **Exclusive Remedy**

To the maximum extent permitted by law, this limited product warranty and the remedies set forth above are exclusive and in lieu of all other warranties, remedies and conditions, whether oral or written, express or implied. To the maximum extent permitted by law, Atlona specifically disclaims all implied warranties, including, without limitation, warranties of merchantability and fitness for a particular purpose. If Atlona cannot lawfully disclaim or exclude implied warranties under applicable law, then all implied warranties covering its products including warranties of merchantability and fitness for a particular purpose, shall provide to its products under applicable law. If any product to which this limited warranty applies is a "Consumer Product" under the Magnuson-Moss Warranty Act (15 U.S.C.A. §2301, ET SEQ.) or other applicable law, the foregoing disclaimer of implied warranties shall not apply, and all implied warranties on its products, including warranties of merchantability and fitness for the particular purpose, shall apply as provided under applicable law.

### **Other Conditions**

Atlona's Limited Product Warranty offering gives legal rights, and other rights may apply and vary from country to country or state to state. This limited warranty is void if (i) the label bearing the serial number of products have been removed or defaced, (ii) products are not purchased from an authorized Atlona dealer or reseller. A comprehensive list of Atlona's authorized distributors, dealers and resellers can be found at [www.atlona.com](http://www.atlona.com).

## **Atlona, Inc Product Registration**

Thank you for purchasing this Atlona product. - We hope you enjoy it and will take an extra few moments to register your new purchase.

Registration creates an ownership record if your product is lost or stolen and helps ensure you'll receive notification of performance issues and firmware updates.

At Atlona we respect and protect your privacy, assuring you that your registration information is completely secure. Atlona product registration is completely voluntary and failure to register will not diminish your limited warranty rights.

To register go to: <http://www.atlona.com/registration>